

WOODCHUCKER

SAW Newsletter



Affiliated member of
Association of Woodturners of Great Britain

Website: <http://www.shropshire-woodturners.org.uk/>

Email Info: shropshirewoodturners@gmail.com

Month	Demonstrator	Club Challenge	
		Turners	Advanced turners
Wednesday 22 nd May 2024	Professional demonstration by Chris Parker	A natural edged bowl	A natural edge bowl Approximately 8" diameter
Sunday 16 th June 2024	All day demonstration	TBC	
Wednesday 26 th June 2024	Professional demonstration by Robert Till	Something turned from a blank provided by the club	
Wednesday 24 th July 2024	Club evening	A platter 6-8" diameter to fit through a 1" slot	Another go at using epoxy resin
Wednesday 28 th August 2024	Professional demonstration by Tony Jones	A matching pair	A wheel 8-12" diameter with 6 or 8 spokes
Wednesday 25 th September 2024	Club evening	A piece of fruit	A Harry Potter style wand
Wednesday 23 rd October 2024	Professional demonstration by Emma Cook	A toy	A toy with movement
Wednesday 27 th November 2024	Professional demonstration by Steve Heeley	A Christmas tree	A round jewellery box with lift out tray
December 2024	AGM TBA	Chairman's challenge	



Welcome

This Month we welcome our newest member Ian Brierley to the Club, Ian has been turning for around a year

Chris Parker will be demonstrating

On the 22nd May we will be hoisting Chris Parker who is a full time Turner, artist, demonstrator & teacher.

He has a passion for texturing and turned pieces using various techniques from a simple wire brush to more advanced techniques, finding inspiration for textures, and forms from various places and ancient ceramicists.

Going to be another good one, not to be missed



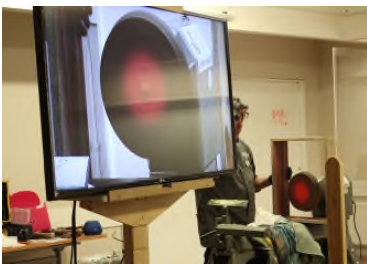
Report on Demonstration by Stewart Furini- Wednesday 24th march

Stewart began by saying that his demonstration would include some aspects that he had included when he last demonstrated to SAW (via Zoom in 2021) and would focus on colouring techniques. He uses various types of colour but finds stain the most versatile as it dries quickly and shows the texture of the wood. He tends to use Chestnut spirit stains and iridescent paints.



He first explained the normal Health and safety implications including the need for Carbon filter respirators and stressed the need to use gloves to protect hands and a home-made frame to prevent paint splatter.

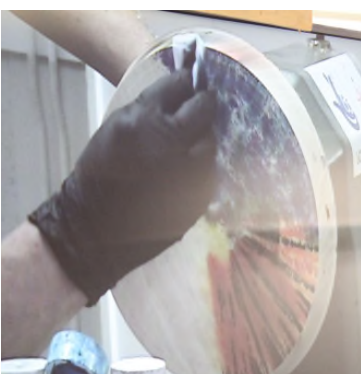
He admitted his tendency to collect airbrushes! He then explained the two main types and demonstrated the best method of attaching the air compressor to the airbrush.



He also stated that he had a different siphon bottle for each colour that he uses; in this way, he cuts down on the cleaning requirements.

A reasonable Air kit can be purchased from Tembertech who have a trading shop on amazon and retail around £80.

https://www.amazon.co.uk/dp/B00LO4PKY2?SubscriptionId=AKIAJO7E50LQ67NV PFZA&ascsubtag=358010307-311-69968689.1714034307&tag=best_reviews_uk_1-21&linkCode=osi&psc=1&th=1



Instead of airbrushing you can dab stain with a piece of paper towel! The colours he mostly uses are from the chestnut and Jo Sonja range

But the advantage of using a siphon/suction feed airbrush, enables you to use it without cleaning each time, if you always go from light to dark.

Continued

A 10" beech blank was then mounted using a screw chuck, and Stewart went on to explain that you can use the blanks to practice your designs prior to turning a blank down, as the wood would get turned away anyhow, so you do not need a finished bowl to practice with the techniques, he uses the term 'Free Wood'.



Stewart started by applying a stain directly to the blank using a homemade template. [Card is fine for this]. He just followed the edge of the template and kept moving it around the blank to develop a pattern. He demonstrated how to alter the degree of shade by moving the airbrush at different distances from the blank. The template needs to be kept dry for this and needs to be wiped every couple of uses so that the residue does not mark the blank.



Various alternative pre-cut templates can be obtained from both Amazon and eBay; these come as singles or as bundles of different effects; they are relatively cheap.

Next, Stewart showed how to use masking tape on a blank after using a lighter colour first and going along the edge of the tape to form a shadow effect. The centre of the blank is now removed to give an overall effect. At this point, you could also frame the colouring effect with an outer ring effect, which will also add framing to the blank. The blanks that are then all sanded down to 240 grit to give the colour a base for the dye to adhere to.



A second blank was then mounted on the screw chuck of the lathe, and Stewart answered questions. The rim was trued up, and an angle was produced in the rim; a spigot was also produced on the base of the blank for later use. The foot was established first by using a pull cut, and then an ogee shape was formed. With the Blank now mounted on the spigot, the initial shape was formed,

Continued

At this point emphasis was on the correct use and Health and Safety points on the use of Power carvers. Texturing was added using a Proxon Long Neck Grinder/texturing tool (alternatives include the King Arthur Merlin2 Long Neck Grinder and the Abortech Mini Carver) to go across the face while the blank was turning.



Without excessive pressure being applied at this point, the speed is around the 550 rpm mark. Stewart tends to use the following types of cutters on his Proxon: Arbortech and Manpa, with the size being 51 mm x 8 mm.

Then a power sander was used to get the desired effect before the application of colour, frequently stopping the lathe to check the Texture effect that was being achieved, he went onto explain that he uses a range of tools and techniques, including a Proxon mini-grinder with mini-arbortech wheels or carbide discs, and more recently, Manpa cutters.



His selected method was to use acrylic paint by Jo Sonia, but first, the blank was covered in black ebonizing colour and allowed to dry.

Next, white and blue colours were applied, with the lathe turning slowly. Stewart used the wood frame cover to go around the blank, which was held in place with magnets. This was used to stop the overspray from the blank

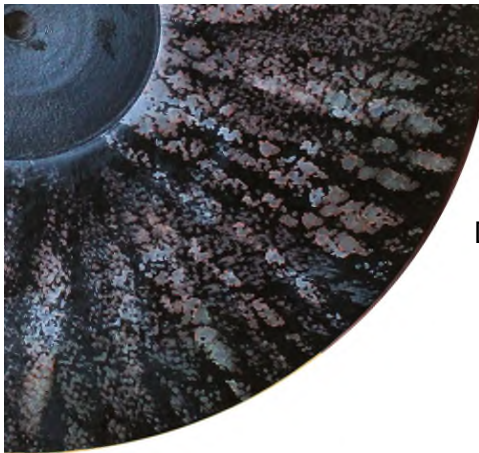
The lathe was then speeded up to produce a flying-out effect with the paint. Stewart covered a lot of different techniques throughout the evening, which everyone seemed to enjoy.



Continued



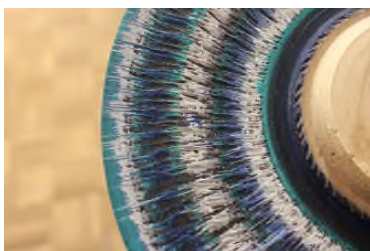
Effects of the use of the Grinder



Dabbing techniques finishes



Centrifugal paint effect



Aprils Turning 's

This Months turning judging was carried out by our guest turner Stewart Furini

This Months 1st in class Challenge was the Multi axes Wig Stand by Ted Barber



Table top Display



Display Table



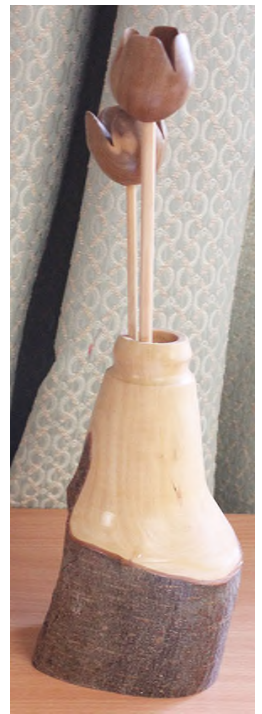
Ian Brierley



Brain Scriens



Julian Birch



Julian Birch



Turnings for Charity

Wig Stands—Repeat request

If you wish to make and donate to this brilliant cause , please bring your items for the display table

It is hope to present them to Macmillan next Month

For those that wish some dimensions / ideas there is a Kade Bolger how to guide on the members page

We are starting to collect these, a presentation will be arranged due course

<https://www.shropshirewoodturners.co.uk/wig-design>

Just simply log in



We are striving to improve our communications

Your committee members

- Chair - Jullian Birch
- Secretary - Paul Plant
- Treasurer - Brian Scrivens

email the club at Shropshirewoodturners@gmail.com

or alternatively Paul@oakleaproducts.co.uk

where we will endeavour to answer you query ASAP

Have your say

If you would like to comment or have a any suggestions for the club, why not let us know either by email or contact a committee member” – and say if you’d like it to be published or just discussed by the committee.

We need to know your views—Its your Club

The next newsletter will be in early May– your opportunity to share information and ideas with fellow SAW members – so send me photos, notes, websites etc and they will included next time.

Perhaps you could write some tips on a chosen topic – as was done in some past Newsletters.

Woodturning Event

All Day

Sunday 16th June

9.30am to 4pm

Bicton Village Hall ,Church Lane, Bicton, Shropshire, SY38EL

All day event

Hosted by Shropshire Woodturning Association, good day out for the enthusiast to meet and talk woodturning picking up tips and advice from our helpful members



All demonstrations from professional turner Rich Dobney

Free Parking

Wood Sales

Raffle

Members Challenge

Free Advice

Refreshments and lunch included

£20

Display table

shropshirewoodturners@gmail.com